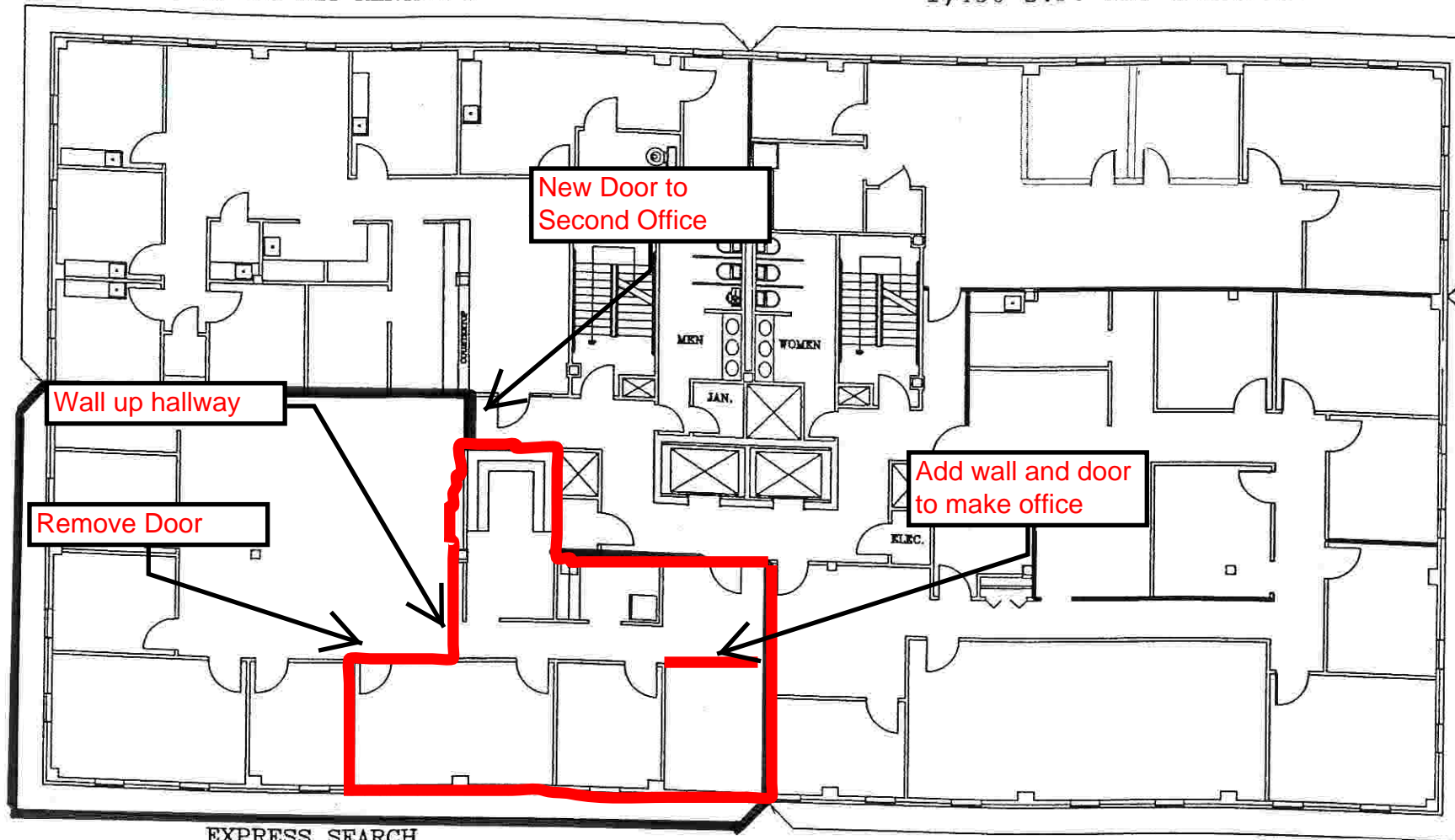


MARK R. GORDON, D.D.S., M.S.
SUITE #502
2,000 S.F. NET RENTABLE

PROLOG, INC.
SUITE #503
1,450 S.F. NET RENTABLE



EXPRESS SEARCH
SUITE #500
2,500 S.F. NET RENTABLE

SABRE SYSTEMS
SUITE #501
2,900 S.F. NET RENTABLE

EISENHOWER I OFFICE BUILDING

2121 EISENHOWER AVENUE, ALEXANDRIA, VA
5TH FLOOR PLAN
8,852 TOTAL S.F. NET RENTABLE

Simpson Development Company, Inc.
Simpson Properties, Ltd.

2121 EISENHOWER AVENUE, SUITE 300
Alexandria, Virginia 22314

Tel: 703-299-0029
Fax: 703-299-0020

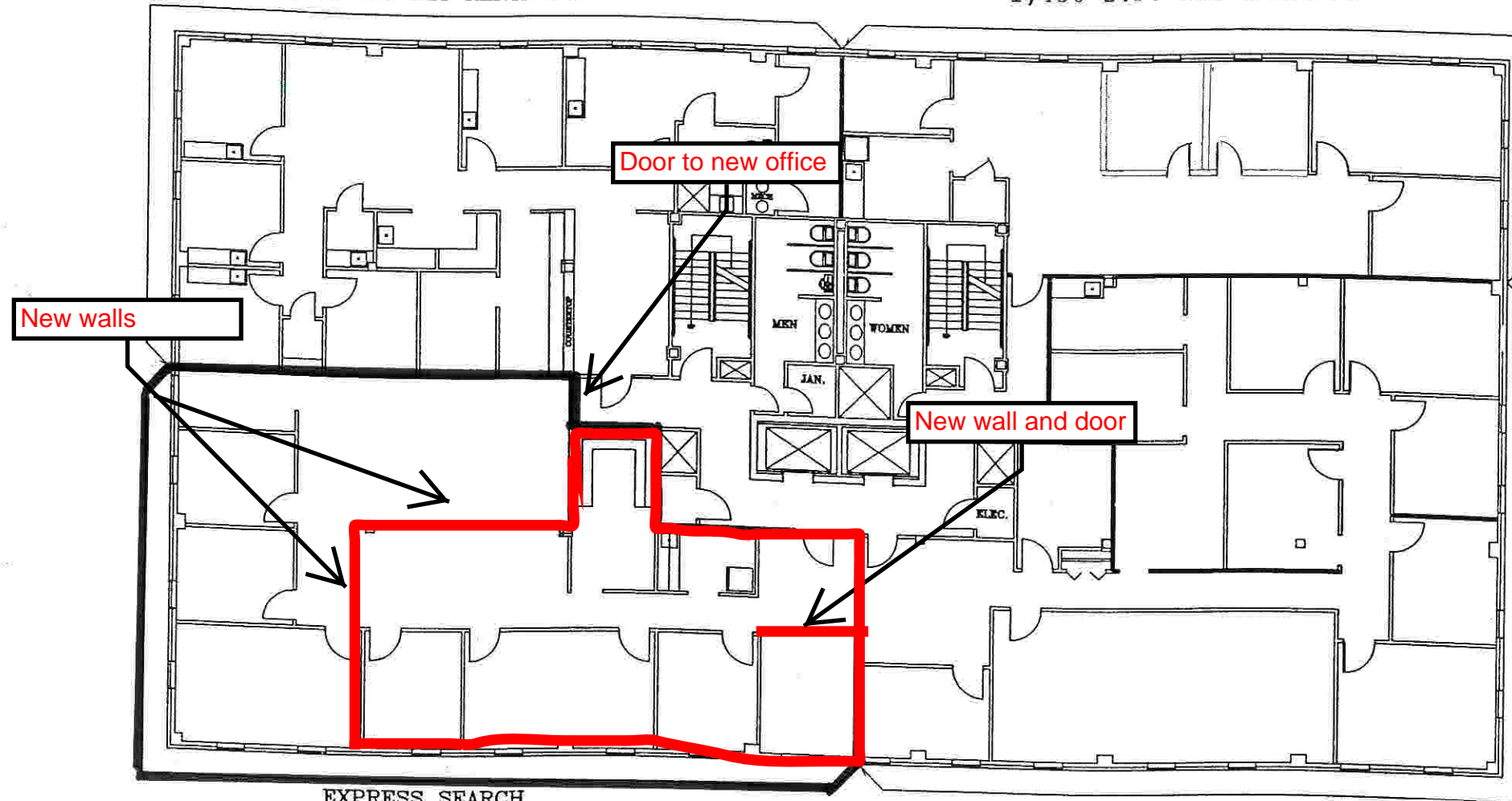


SCALE: 1/16"=1'-0"

S:\UReactor\SIMPSON\S-E\15E1.dwg, 06/01/2002 03:07:47 PM, JRECTOR

MARK R. GORDON, D.D.S., M.S.
SUITE #502
2,000 S.F. NET RENTABLE

PROLOG, INC.
SUITE #503
1,450 S.F. NET RENTABLE



EXPRESS SEARCH
SUITE #500
2,500 S.F. NET RENTABLE

SABRE SYSTEMS
SUITE #501
2,900 S.F. NET RENTABLE

EISENHOWER I OFFICE BUILDING

2121 EISENHOWER AVENUE, ALEXANDRIA, VA
5TH FLOOR PLAN
8,852 TOTAL S.F. NET RENTABLE

Simpson Development Company, Inc.
Simpson Properties, Ltd.

2121 EISENHOWER AVENUE, SUITE 300
Alexandria, Virginia 22314

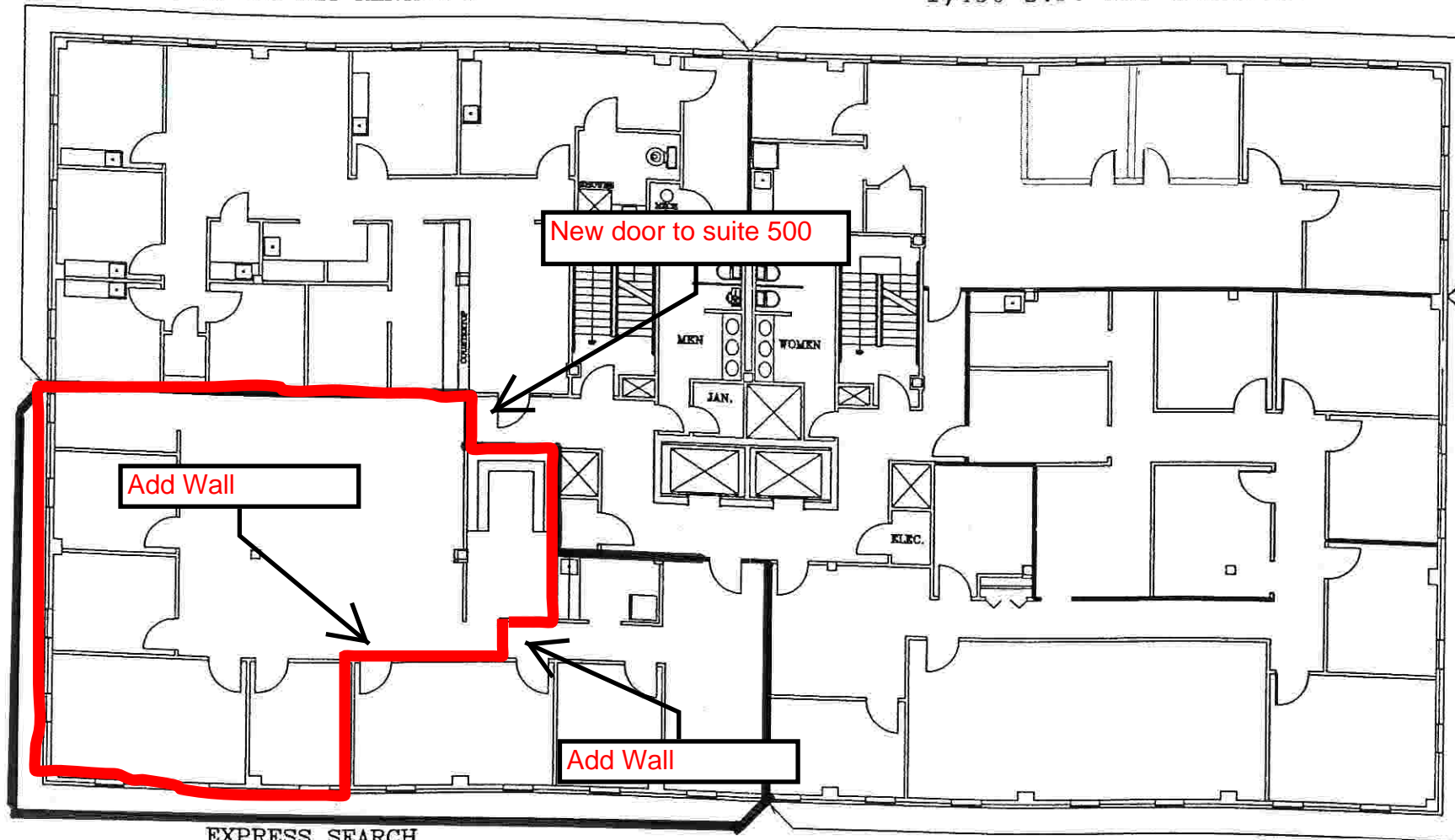
Tel: 703-299-0029
Fax: 703-299-0020



SCALE: 1/16"=1'-0"

MARK R. GORDON, D.D.S., M.S.
SUITE #502
2,000 S.F. NET RENTABLE

PROLOG, INC.
SUITE #503
1,450 S.F. NET RENTABLE



EXPRESS SEARCH
SUITE #500
2,500 S.F. NET RENTABLE

SABRE SYSTEMS
SUITE #501
2,900 S.F. NET RENTABLE

EISENHOWER I OFFICE BUILDING

2121 EISENHOWER AVENUE, ALEXANDRIA, VA
5TH FLOOR PLAN
8,852 TOTAL S.F. NET RENTABLE

Simpson Development Company, Inc.
Simpson Properties, Ltd.

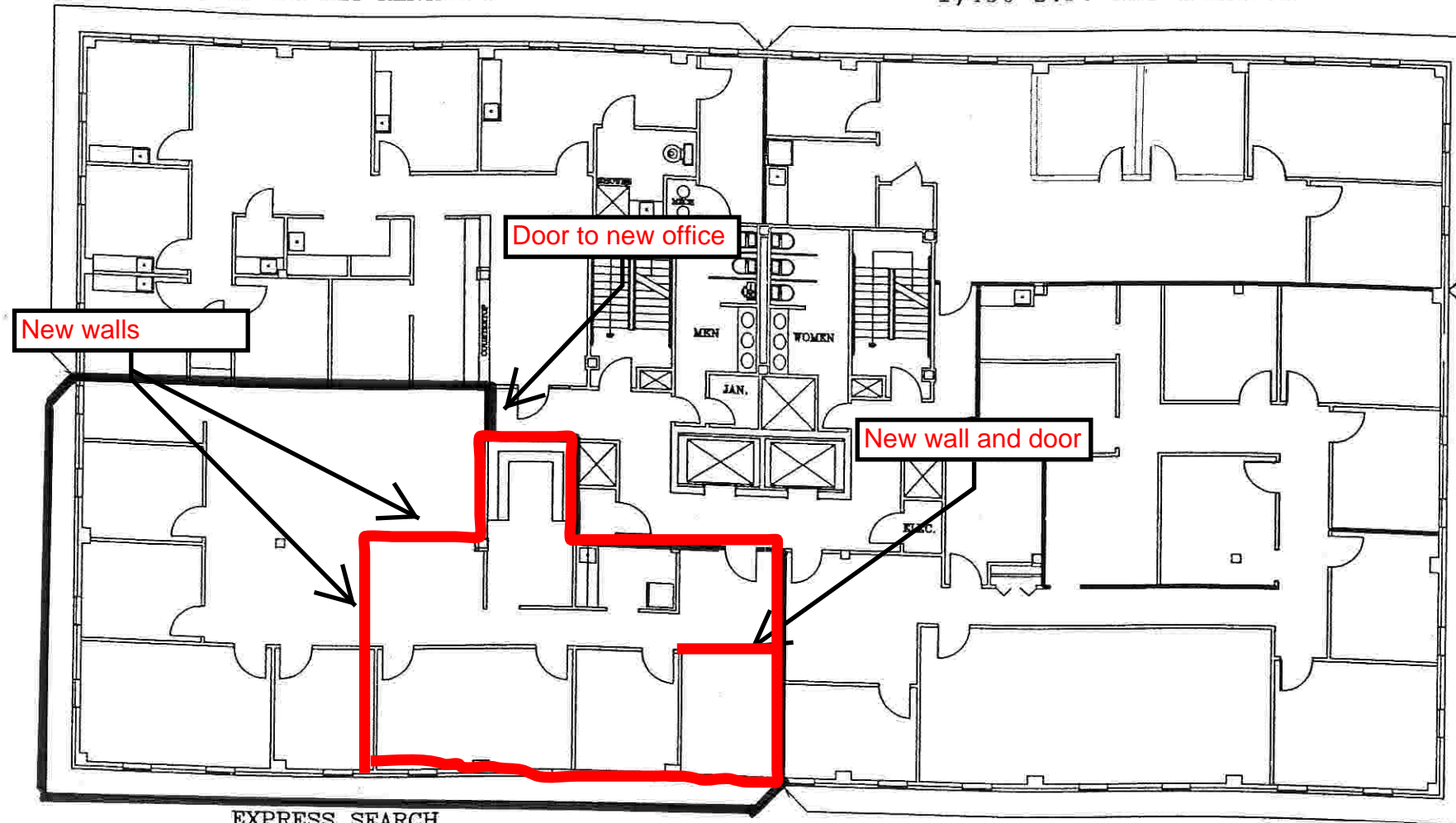
2121 EISENHOWER AVENUE, SUITE 300
Alexandria, Virginia 22314

Tel: 703-299-0029
Fax: 703-299-0020



MARK R. GORDON, D.D.S., M.S.
SUITE #502
2,000 S.F. NET RENTABLE

PROLOG, INC.
SUITE #503
1,450 S.F. NET RENTABLE



EXPRESS SEARCH
SUITE #500
2,500 S.F. NET RENTABLE

SABRE SYSTEMS
SUITE #501
2,900 S.F. NET RENTABLE

EISENHOWER I OFFICE BUILDING

2121 EISENHOWER AVENUE, ALEXANDRIA, VA
5TH FLOOR PLAN
8,852 TOTAL S.F. NET RENTABLE

Simpson Development Company, Inc.
Simpson Properties, Ltd.

2121 EISENHOWER AVENUE, SUITE 300
Alexandria, Virginia 22314

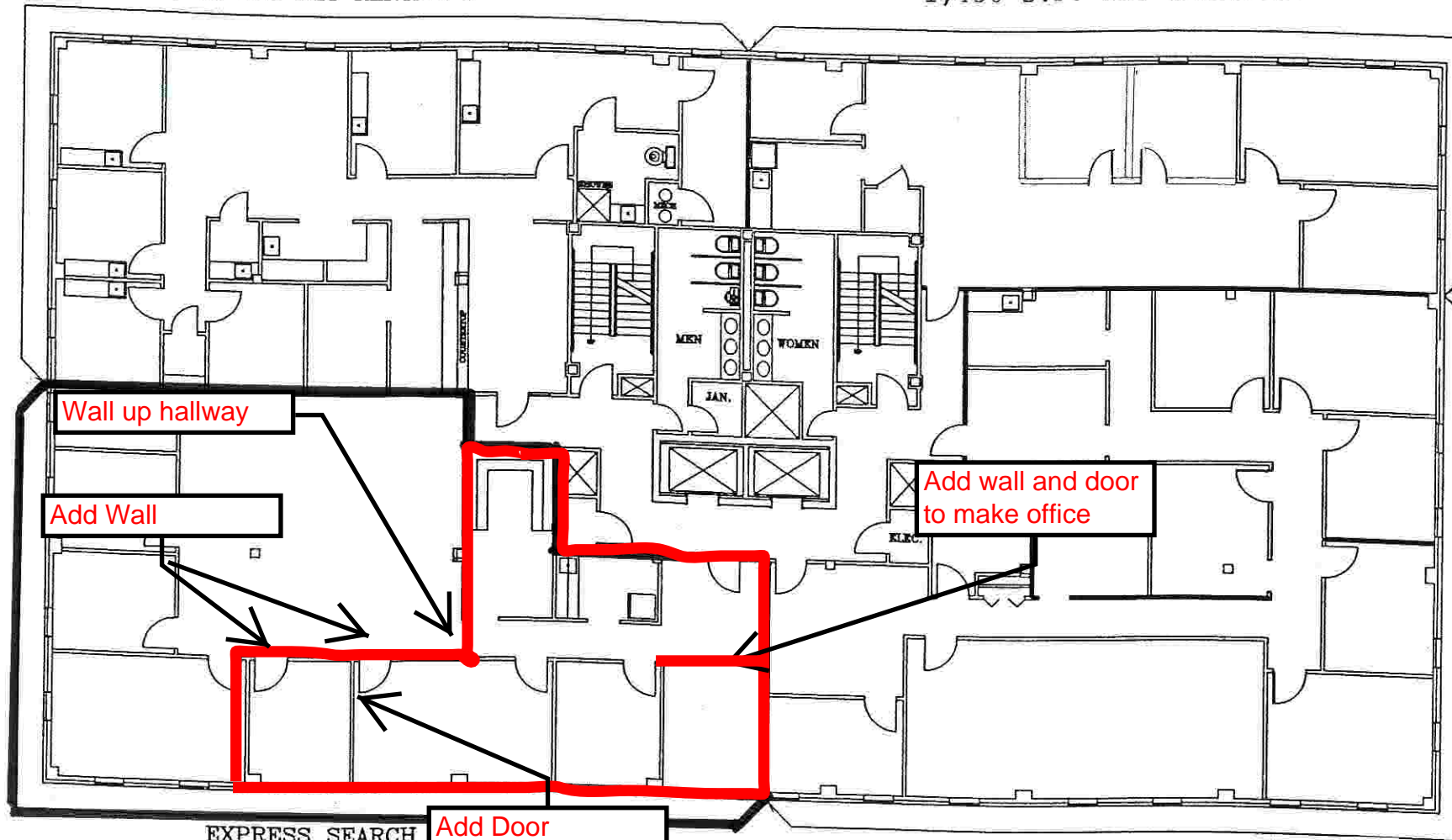
Tel: 703-299-0029
Fax: 703-299-0020



SCALE: 1/16"=1'-0"

MARK R. GORDON, D.D.S., M.S.
SUITE #502
2,000 S.F. NET RENTABLE

PROLOG, INC.
SUITE #503
1,450 S.F. NET RENTABLE



EXPRESS SEARCH
SUITE #500
2,500 S.F. NET RENTABLE

SABRE SYSTEMS
SUITE #501
2,900 S.F. NET RENTABLE

EISENHOWER I OFFICE BUILDING

2121 EISENHOWER AVENUE, ALEXANDRIA, VA
5TH FLOOR PLAN
8,852 TOTAL S.F. NET RENTABLE

Simpson Development Company, Inc.
Simpson Properties, Ltd.

2121 EISENHOWER AVENUE, SUITE 300
Alexandria, Virginia 22314

Tel: 703-299-0029
Fax: 703-299-0020



SCALE: 1/16"=1'-0"